

Agency Purpose

The statutory mission of the Minnesota Department of Health (MDH) is to protect, maintain, and improve the health of all Minnesotans. MDH approaches its work through core agency values of integrity, collaboration, respect, science-based decision making, & accountability.

MDH is the state's lead public health agency, responsible for operating programs that prevent infectious and chronic diseases and promote clean water, safe food, quality health care, and healthy living. The department also plays a significant role in making sure that Minnesota is ready to effectively respond to serious emergencies, such as natural disasters, emerging disease threats, and terrorism. The department carries out its mission in close partnership with local public health departments, tribal governments, the federal government, foreign countries, and many health-related organizations.

At a Glance

Community and Family Health Promotion

- Served 226,915 Minnesotans in the in the Women, Infant and Children Program in FY 2010.
- Screened 19,728 low income women for breast and/or cervical cancer in 2009.
- Tracked outcomes to measure Minnesota's progress toward reducing health disparities.
- Awarded grants to 53 community health boards and 9 tribal governments to implement evidenced based policy, systems, and environmental change strategies to reduce obesity and tobacco use and exposure.

Policy Quality and Compliance

- Monitors 7,950 health care facilities and providers for safety annually.
- Supports state and federal health reforms including payment reforms, performance measurement, delivery system design, transparency, insurance coverage, and Health Insurance Exchanges.

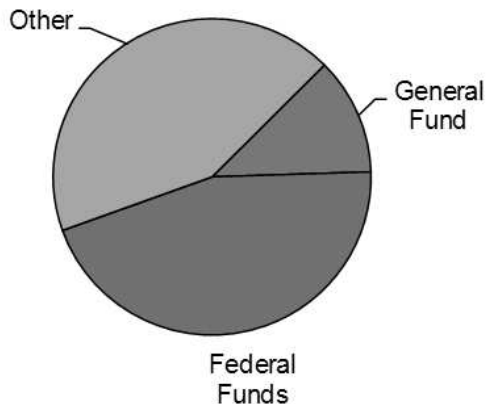
Health Protection

- Monitors food, drinking water, lodging and swimming pool safety at over 21,000 licensed restaurants and hotels statewide annually.
- Coordinates programs to immunize 70,000 infants annually to prevent serious disease annually.
- Processed over 70,000 tests on clinical specimens and 95,000 analytical tests on environment samples in the Public Health Lab in FY 2010.
- Prepared for and responded to events with public health impact including pandemic influenza (H1N1), floods and weather related incidents, and local and national foodborne disease outbreaks.

Administrative Services

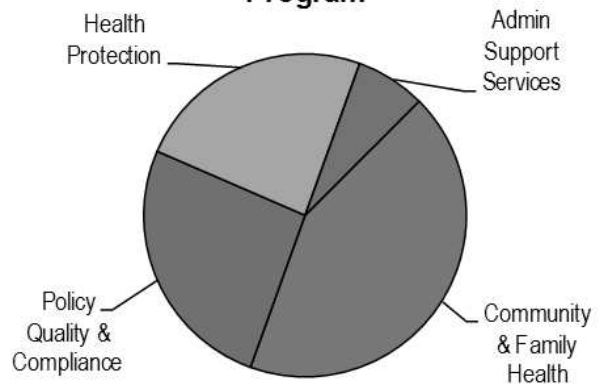
- Provides administrative oversight to over \$300 million in grants annually.
- Manages MDH central networks and infrastructure connecting all employees and 11 building locations.

Est. FY 2010-11 Expenditures by Fund



Source: Consolidated Fund Statement.

Est. FY 2010-11 Expenditures by Program



Source: Minnesota Accounting and Procurement System

Strategies

In focusing on its mission, MDH's Strategic Plan has six framework goals, which are very diverse and far-reaching and focus on preventing health problems before they occur. Embedded in the work of each goal is the overarching goal of eliminating health disparities and achieving health equity.

- **Prevent the Occurrence and Spread of Diseases:** to ensure that individuals and organizations in Minnesota understand how to prevent diseases and practice disease prevention and disease threats are swiftly detected and contained.
- **Prepare for and Respond to Disasters and Emergencies:** to ensure that emergencies are rapidly identified and evaluated, resources for emergency response are readily mobilized, and Minnesota's emergency planning and response protects and restores health.
- **Make Physical Environments Safe and Healthy:** to ensure that Minnesotans' food and drinking water is safe, Minnesota's air, water and soil are safe and non-toxic, and the built environment in Minnesota supports safe and healthy living for all.
- **Help All People Get Quality Health Care Services:** to ensure that health care in Minnesota is safe, family and patient-centered, effective and coordinated, that health care services are available throughout Minnesota and that all Minnesotans have affordable coverage for the health care they need.
- **Promote Health throughout the Lifespan:** to ensure that all Minnesotans are given a healthy start in life, Minnesotans make healthy choices, and Minnesotans create social environments that support safe and healthy living at all ages.
- **Assure Strong Systems for Health:** to ensure that Minnesota's infrastructure for health is strong, people-centered and continues to improve, that Minnesota's health systems are transparent, accountable and engage many diverse partners and that government policies and programs support health.

Operations

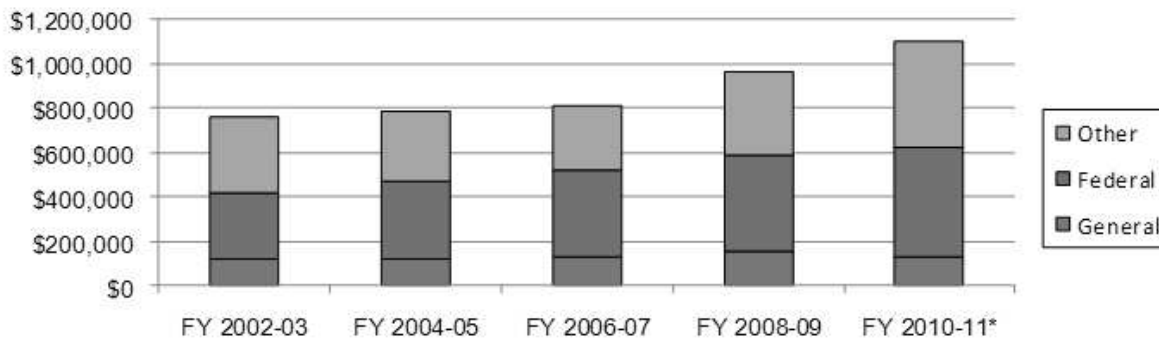
- **Prevent the Occurrence and Spread of Diseases** - MDH detects and investigates disease outbreaks, controls the spread of disease, encourages immunizations, and seeks to prevent or manage chronic and infectious diseases, including HIV/AIDS, tuberculosis, diabetes, asthma, cardiovascular disease, and cancer.
- **Prepare for and Respond to Disasters and Emergencies** - MDH works with many partners – including local public health departments, public safety officials, health care providers, and federal agencies – to prepare for significant public health emergencies. The department takes an "all-hazards" approach to planning so that Minnesota is prepared to respond quickly and effectively to any type of public health emergency, ranging from natural disasters to terrorism to an influenza pandemic.
- **Make Physical Environments Safe and Healthy** - MDH identifies and evaluates potential health hazards in the environment, from simple sanitation to risks associated with toxic waste sites and nuclear power plants. The department protects the safety of public water supplies and the safety of the food eaten in restaurants. The department's public health laboratories analyze complex and potentially dangerous biological, chemical, and radiological substances, employing techniques not available privately or from other government agencies.
- **Help All People Get Quality Health Care Services** - MDH safeguards the quality of health care in the state by regulating many people and institutions that provide care, including hospitals, health maintenance organizations, and nursing homes. Minnesota has pioneered improvements in the health care system, including the development of policies that assure access to affordable, high-quality care that offer models for the nation and assist providers to implement best practices based on national guidelines for care. Minnesota is a national leader in e-health and administrative simplification. The department monitors trends in costs, quality, and access in order to inform future policy decisions. The department also reports to consumers on health care quality through the nursing home report card, adverse health events report, and other special projects. MDH is the lead agency implementing Minnesota's health reform initiative and works with other state agencies on federal health care reform.
- **Promoting Health throughout the Lifespan** - MDH provides information and services to help people make healthy choices. Eating nutritiously, being physically active, and avoiding unhealthy substances, such as tobacco, can help prevent many serious diseases and improve the overall health of the state. MDH protects the health of mothers and children through a variety of maternal and child health programs such as family home visiting, newborn screening and follow-up, early identification and intervention for children with health and developmental issues, improved pregnancy outcomes efforts and implementation of health care homes. The department also protects the health of pregnant and nursing mothers, infants and young children through

the supplemental nutrition program Women, Infants and Children (WIC) and services for children with special health needs. Minnesota was one of the first states to regulate smoking in public places and has developed tobacco prevention strategies used nationwide. MDH programs also address the management of chronic diseases, oral health, occupational safety, injury, and violence prevention.

- **Assure Strong Systems for Health** – Minnesota has a nationally renowned public health system built on well-articulated state and local government roles. MDH provides technical and financial assistance to local public health agencies, public and private care providers, non-governmental organizations and teaching institutions. Technical assistance provides partners with access to current scientific knowledge which is commonly in the form of direct consultation, formal reports, and training. MDH monitors and reports on public health data that is used across the health system to guide programs and policies.

Budget Trends

Total Expenditures by Fund



* FY 2010-11 is estimated, not actual

Minnesota Department of Health annual non-general fund budget is dependent on grant opportunities (federal and private) and other state funds. Increases in federal grants are related to federal Emergency Preparedness Funding, including one-time funding for H1N1 response in FY 2010, as well as other one-time granting opportunities such as grants through the American Recovery and Reinvestment Act (ARRA) and the Patient Protection and Affordable Care Act (PPACA). Increases in other funds are related to increased one-time funding for Health Care Reform and the State Health Improvement Program (SHIP), as well as new funding through the Clean Water Legacy Fund. Although additional federal funding has become available, these funds are categorical in nature and typically do not support core public health infrastructure. In addition, this categorical funding is not sustainable, making it difficult to maintain an adequate core of highly trained personnel who can respond rapidly to future needs.

Contact

625 Robert Street North
Saint Paul, Minnesota 55155

Commissioner's Office
Phone: (651) 201-5810
E-Mail: Health.Commissioner@state.mn.us

Agency Overview: <http://www.health.state.mn.us/orginfo.html>