

Agency Purpose

The purpose of the Minnesota Department of Public Safety (DPS) is to protect the citizens and communities of Minnesota through a range of activities that promote and support prevention, preparedness, response, recovery, education and enforcement. These objectives are achieved through a focus on saving lives, providing efficient and effective services, maintaining public trust, and developing strong partnerships. DPS coordinates the functions of the state relating to the safety and convenience of its citizens through M.S. 299A.

At a Glance

Alcohol and Gambling Enforcement

- In FY 2010 conducted approximately 22,000 background checks and 8,400 fingerprint submissions;
- Provided services to 12,500 liquor licensees', 853 cities, and 87 counties; and
- Imposed \$20,000 in alcohol and gambling violations.

Bureau of Criminal Apprehension

- Examined 21,673 cases and served 548 law enforcement agencies;
- Conducted 338,000 background checks; and
- Maintained records on more than 22,500 registered predatory offenders.

Driver and Vehicle Services

- Processed over 4.6 million vehicle registration-related transactions;
- Collected \$910 million in revenue;
- Maintained 6,180,630 driver history records; and
- Issued 8,836,996 drivers licenses and ID cards since December 2004.

Emergency Communication Networks

- The ARMER system covers 85% of the state's population, utilizing over 35,000 radios by over 1,000 different emergency response agencies;
- The 9-1-1 system routes over two million calls annually; and
- 9-1-1 calls are answered at 105 local Public Safety Answering Points (PSAPs) and 10 regional State Patrol PSAPs.

Fire Marshal / Office of Pipeline Safety

- Conducted 424 fire investigations; 110 of those were determined to be arson;
- 35 fire deaths in CY 2009 is the lowest death total on record; and

- As agents for the U.S. DOT, pipeline inspectors inspect 9,459 miles of high-pressure interstate pipelines plus over 63,000 miles of intrastate pipelines.

Homeland Security and Emergency Management

- Over 500 state, federal, and local government and private-sector personnel participated in nuclear plant preparedness drills and exercises;
- There were 743 emergency management performance grants executed; and
- Since 2005 the governor has requested three emergency declarations and seven disaster declarations.

Office of Justice Programs

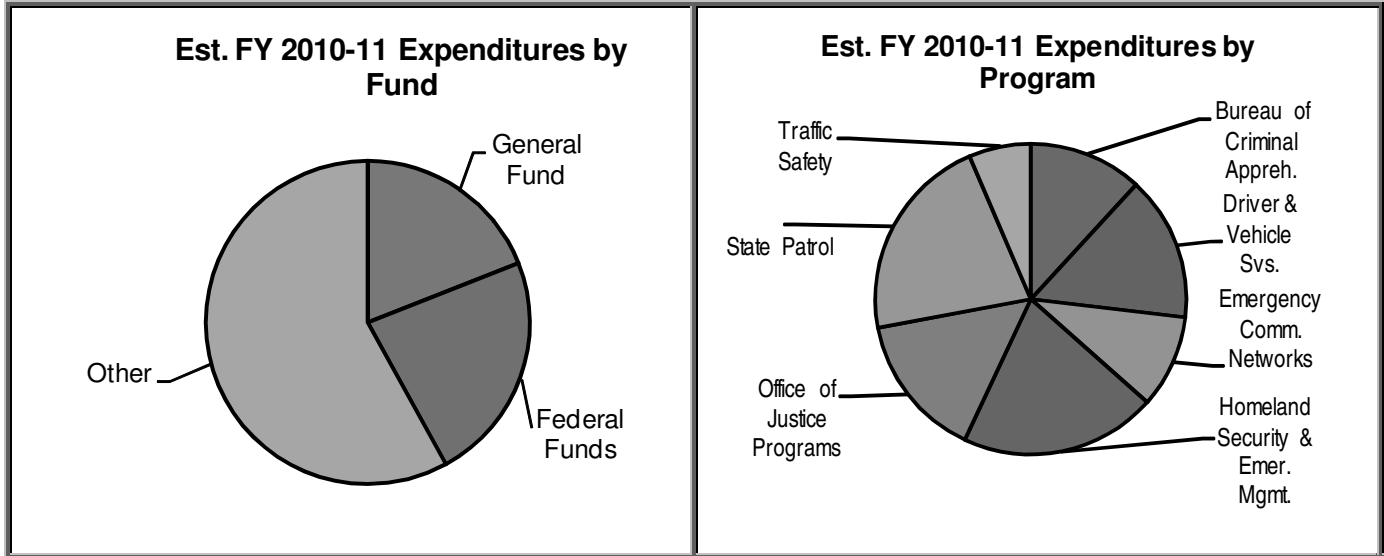
- Approximately 350 crime victim programs received \$13.5 million in funding. Programs provided services to 100,000 victims;
- Awarded \$2.4 million in reparations claims; and
- Collected \$382,705 in restitution; and
- Administered 200 law enforcement and community grants totaling over \$5.2 million in state funds and over \$10.3 million in federal funds.

Office of Traffic Safety

- Seat belt usage has increased from 7% in 1977 to 90% in 2009; and
- Distributed 160 grants covering 280 local units of government and 75 counties, 50 statewide grants to other state agencies, other divisions of Public Safety, courts and nonprofits, and 30 contracts to organizations and individuals.

State Patrol

- Made 5,155 Driving While Impaired (DWI) arrests;
- Conducted 39,477 roadside inspections and 20,866 school bus inspections; and
- Capitol Security provides security to more than 14,000 judicial, legislative and state employees, and security to over one million citizens visiting the Capitol Complex annually.



Source: Consolidated Fund Statement.

Source: Minnesota Accounting and Procurement System (MAPS)

Strategies

In order to protect the citizens and communities of Minnesota, DPS has three overarching functions:

- Enforcement
- Prevention
- Service

These three functions involve a wide range of strategies that promote and support our purpose of prevention, preparedness, response, recovery, education and enforcement. In order to support our major functions, our strategies include public education, media relations, enforcement of laws and support of programs conducted at the local level. The department also partners with community coalitions, fire and law enforcement agencies, advisory boards, school districts, health and safety organizations, and other state and federal agencies.

Operations

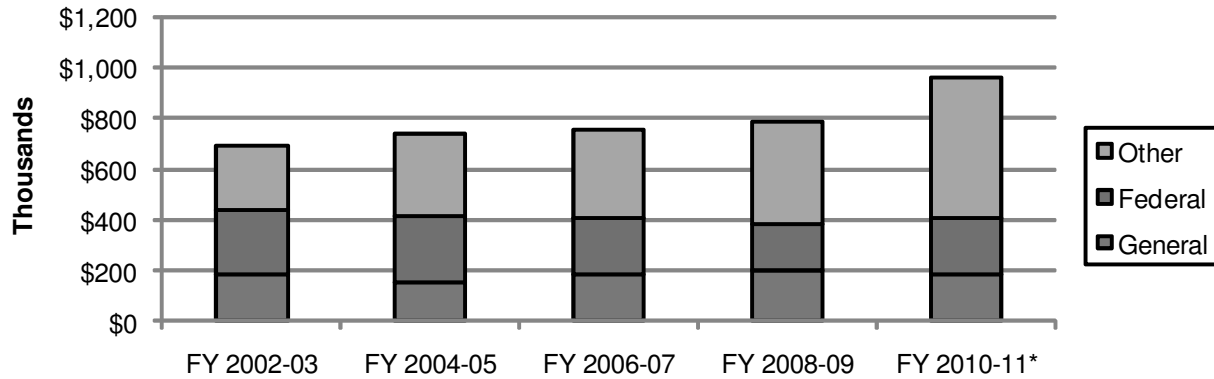
- **Alcohol and Gambling Enforcement** enforces liquor licensing and gambling laws through compliance checks, assistance to local agencies with criminal investigations, and efforts to combat underage drinking.
- **Bureau of Criminal Apprehension** provides complete investigative assistance to local agencies, forensic laboratory services, criminal history information, and training to peace officers.
- **Driver and Vehicle Services** provides vehicle registration, driver’s license, and driver evaluation services. Driving records and accident reports are also maintained.
- **Emergency Communication Networks** oversees the 9-1-1 System standards; provides technical assistance to cities and counties to implement and improve 9-1-1; manages and distributes funds to provide for 9-1-1 service, and distributes funds for the regional public safety trunked radio system.
- **Homeland Security and Emergency Management** coordinates disaster preparedness, response, recovery, and mitigation for homeland security, natural, and other types of major emergencies and disasters.
- **Office of Justice Programs** was created by executive order of the governor in May 2003, and brings together programs formerly operated through Minnesota Planning and the Office of Crime Victim Ombudsman, and the departments of Public Safety, Education, and Economic Security. The office provides leadership and resources to reduce crime, improve the functioning of the criminal justice system, and assist crime victims. The office also provides grant administration, criminal justice information and research, and assistance and advocacy to crime victims.
- **Office of Traffic Safety** administers programs and grants that reduce the number and severity of traffic crashes in Minnesota including programs such as alcohol awareness, safety belt promotion, and motorcycle training.

- **State Fire Marshal and Pipeline Safety** protects human lives and property by promoting fire prevention and pipeline safety through inspections, investigations, and public education.
- **State Patrol** enforces traffic laws on Minnesota’s highways, responds to crashes, inspects commercial vehicles, and assists local law enforcement.

DPS also has five internal support units that provide services relating to communication, fiscal administration, human resource management, internal affairs, and technical support.

Budget Trends Section

Total Expenditures by Fund



* FY 2010-11 is estimated, not actual. Source data for the previous chart is the Minnesota Accounting and Procurement System (MAPS) as of 08/25/2010.

- **Retirements – 29%** of our employees will be eligible to retire in the next 5 years.
- **Competition for quality and skilled lab employees within the context of a state salary structure, which is not competitive with local units of government.**
- **Federal mandates.**
- **Reduction in federal and state funds** – The amount of federal funds we have received for homeland security and law enforcement activities has been declining in the past few years and further reductions are anticipated in these areas as well as potential reductions in highway safety funding.
- **Number and type of disasters** – Since 2005 the Governor has requested 3 emergency declarations and 7 disaster declarations.
- **Changes in rate and type of crime impacts where resources are expended.**
- **Fuel and energy related costs** – Changes in fuel costs can dramatically impact division budgets, most especially the Minnesota State Patrol (MSP) and Bureau of Criminal Apprehension (BCA).
- **Contract settlements for wage and benefit increases.** A 1% increase in wage and benefit contracts costs the agency \$1.4 million each year.
- **The need to keep up with changes in technology** – These changes must be absorbed within existing division budgets.
- **Increase demand** for services from our criminal justice partners.

Contact

Office of the Commissioner: (651) 201-7160
 Department of Public Safety Website: <http://www.dps.state.mn.us/>

Minnesota Department of Public Safety
 Bremer Tower Suite 1000
 Saint Paul, Minnesota 55101