

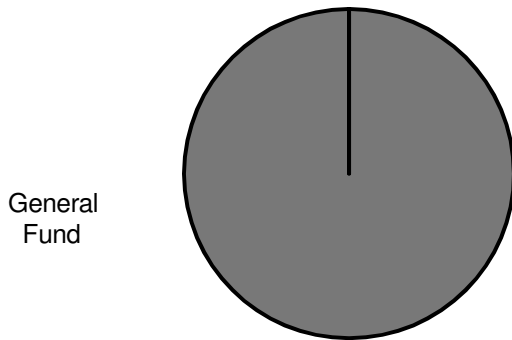
Agency Purpose

The Workers' Compensation Court of Appeals (WCCA) was established by the legislature as the exclusive statewide authority to decide all questions of law and fact in workers' compensation disputes within the court's appellate jurisdiction as provided by M.S. Chapters 175A and 176.

At a Glance

- Budget of approximately \$1.7 million annually
- Five Judges
- Approximately 13.65 full-time equivalents (including judges)
- 353 decisions issued in FY 2009-10.

Est. FY 2010-11 Expenditures by Fund



Source: Consolidated Fund Statement.

Strategies

WCCA strategies are to:

- deliver services as expeditiously as possible while maintaining the integrity of the decision-making function;
- produce high quality and consistent decisions on a timely basis in order to provide the quick and efficient delivery of indemnity and medical benefits to qualified injured workers at a reasonable cost to employer;
- provide economic stability for injured workers and their families in financial crises due to work-related illnesses and injuries;
- provide for timely cure and treatment of work-related illnesses and injuries;
- support a competitive business climate for Minnesota employers by providing high quality and consistent decisions and reducing the amount of litigation; and
- provide direction and motivation for employers to create safe and healthy work environments for employees.

Operations

The court consists of five judges appointed by the governor and confirmed by the state senate. The governor designates one of the five as chief judge, who has responsibility for the administration of the court. The court performs an appellate function, reviewing decisions of the Workers' Compensation Division of the Department of Labor and Industry, and the Office of Administrative Hearings. This includes

- reviewing the evidentiary record created by the initial decision making body;
- presiding over oral arguments;
- conducting necessary legal research;
- deciding the issues; and
- issuing appropriate written orders, decisions, and memoranda.

Decisions are written to inform the court's clientele of the basis of the decisions and to create a body of law pertaining to workers' compensation issues. Decisions of this court are appealable directly to the Minnesota Supreme Court.

Key Activity Goals & Measures

Goal: The key goal of the WCCA is to produce high quality and consistent decisions in a timely manner to ensure the quick and efficient delivery of workers' compensation benefits to qualified injured workers at a reasonable cost to employers.

Measure: WCCA issues its decisions an average of 55 days after oral argument before the court or assignment of the cases to the judges. The average time over the past five years has been 56 days.

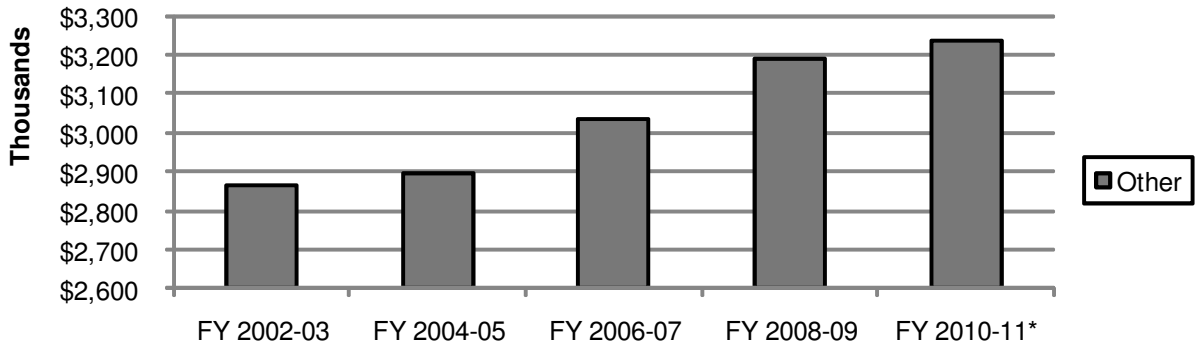
Related Activity: WCCA maintains a website that provides information, rules and a searchable text of decisions of the court.

Goal: WCCA has a goal to produce decisions which are consistent and which bring predictability to the resolution of workers' compensation disputes.

Measure: WCCA work towards this goal has been a factor in reducing the amount of litigation in the workers' compensation system.

Budget Trends

Total Expenditures by Fund



* FY 2010-11 is estimated, not actual. Source data for the previous chart is the Minnesota Accounting and Procurement System (MAPS) as of 08/20/10.

The primary factors influencing operations of the WCCA continue to be the number of work-related injuries sustained and the extent of litigation over benefit entitlement. Other factors include workplace safety, new legislation, insurance costs, medical costs, and economic conditions.

Contact

Workers' Compensation Court of Appeals
 Minnesota Judicial Center
 25 Rev. Dr. Martin Luther King Jr. Blvd.
 St. Paul, Minnesota 55155-1500

WCCA Web Home Page: <http://www.workerscomp.state.mn.us>.

Information available includes: WCCA Decisions 1999 to the Present as well as Rules of Practice.

General Information:
 Phone: (651)296-6526
 Fax: (651)297-2520